



Initial Update Briefing

Pickens County Emergency Management Mission

Pickens County Emergency Management coordinates and integrates all activities necessary to build, sustain, and improve the capability to mitigate against, prepare for, protect against, respond to, or recover from threatened or actual natural disasters, acts of terrorism or other manmade disasters.



Situation

- **Describe what has happened that has created Incident (i.e., HAZMAT Spill, Train Derailment, Tornado, Earthquake, Flooding, Severe Thunderstorms, Dam failure, Gas Line rupture, Forrest Fire, etc.)**



Safety Briefing

- **General safety in building, fire escapes, driving, Dosimetry, potassium iodide, etc.**



Weather

- **Describe weather now, forecast for next 24 hours**
 - *Include wind speed, direction*
 - *Any factors which have implications for incident*



Threatened infrastructure

- **Describe any threatened/damaged utility or infrastructure**
 - *Consider 2nd order effect of impact (i.e., other watersheds, stress on limited resources)*
 - *Consider 3rd order impact of incident*
 - *Consider possible interruption of food chain supply*



Map/s of impacted area

➤ **Place holder for map of area immediately impacted**



Map/s of impacted area

➤ **Place holder for map of area which may be threatened**



Quick Review of Emergency Operations Center

- **Describe which Emergency Support Functions (ESFs) are currently be managed and who is handling.**
- **Explain which ESF each new person will manage**
- **Hand out Check list for that position**
- **Answer any questions**



Administration Briefing

- *Signing in and badges*
- *Chain of Command (who you report to)*
- *Operations Rhythm*
- *Feeding*
- *Facilities*
- *Sleeping arrangements*
- *Telephone directories*
- *Operational Periods (Shift Change Briefing)*
- *Fuel*



Backup Slides – Nuclear Incident (sample)



Initial Update Briefing

Pickens County Emergency Management Mission

Pickens County Emergency Management coordinates and integrates all activities necessary to build, sustain, and improve the capability to mitigate against, prepare for, protect against, respond to, or recover from threatened or actual natural disasters, acts of terrorism or other manmade disasters.



Safety Briefing

- *Pay attention to the hazards in this building. Traffic outside moves quickly. Be sure you make eye contact with the driver of the vehicle before crossing in front of it. Watch for pinch points in the EOC. If there is a fire, move and exit away from the fire. Move outside to the flag pole and we will get accountability. If you need to for emergency response, dial 9, then 911. Provide as much detail as you can to Dispatch. Wash your hands regularly and cough and sneeze into the crook of your arm.*
- *Read your Self-Reading Dosimeter (if issued) every 15-30 minutes. Keep your supervisor apprised of rates of exposure and contamination levels.*
- *Keep Potassium Iodide (KI, if issued) handy. Do not take KI until instructed to do so.*



Initial Update Briefing

Weather

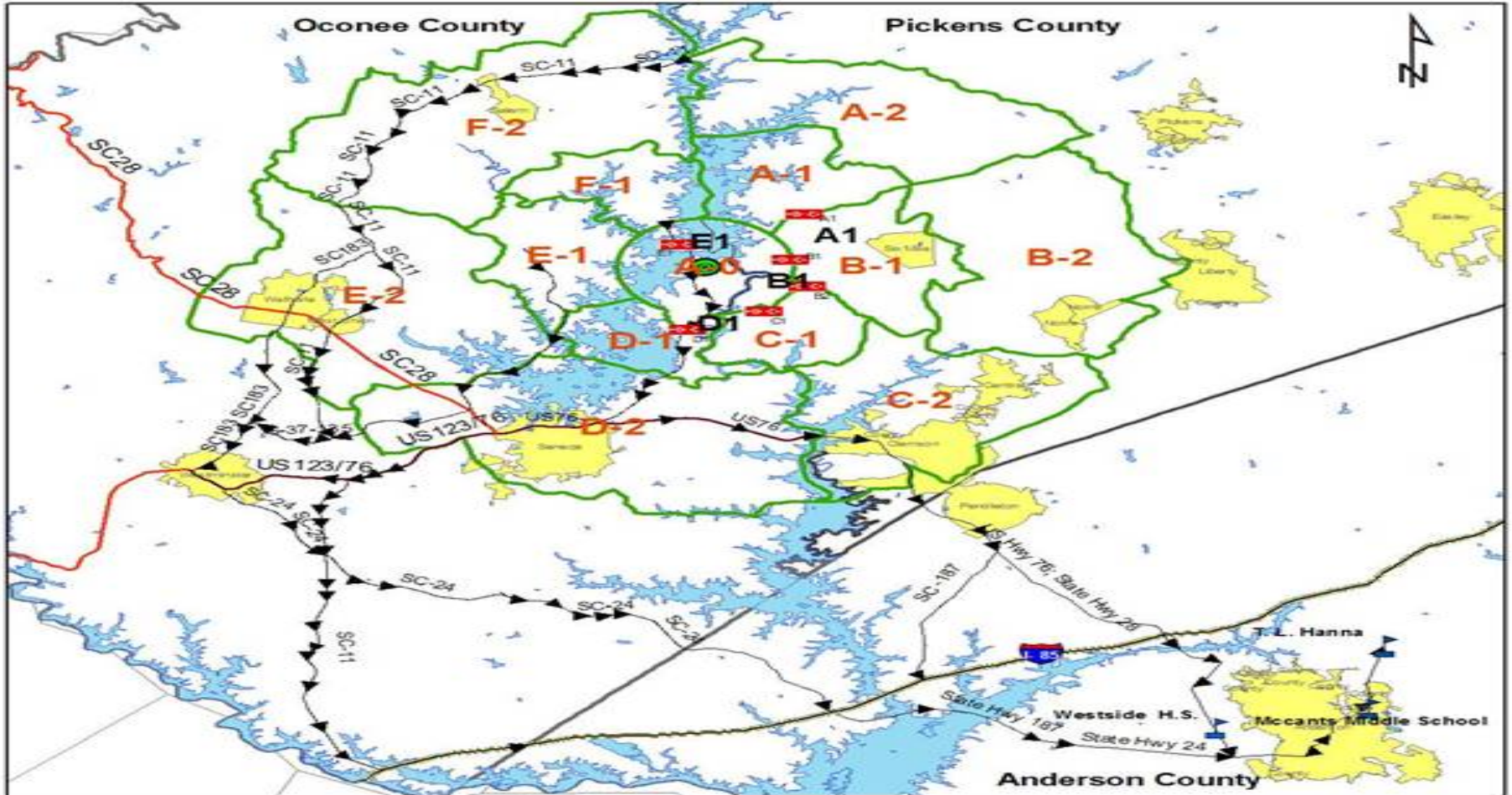
The low temperature today was 45 degrees and the high is expected to be 72. Winds are from the southwest at 10 mph. Chance of thunderstorms is 30%

Tonight, increasing clouds with a low around 50 degrees. Winds should die down until daylight. The high is expected to be around 80 degrees. No chance of rain tomorrow but the wind will again be out of the west at 10 MPH.



Threatened infrastructure

- **Describe any threatened/damaged utility or infrastructure**
 - *The following maps will discuss the areas that are most threatened by the immediate threat and the residual effect.*





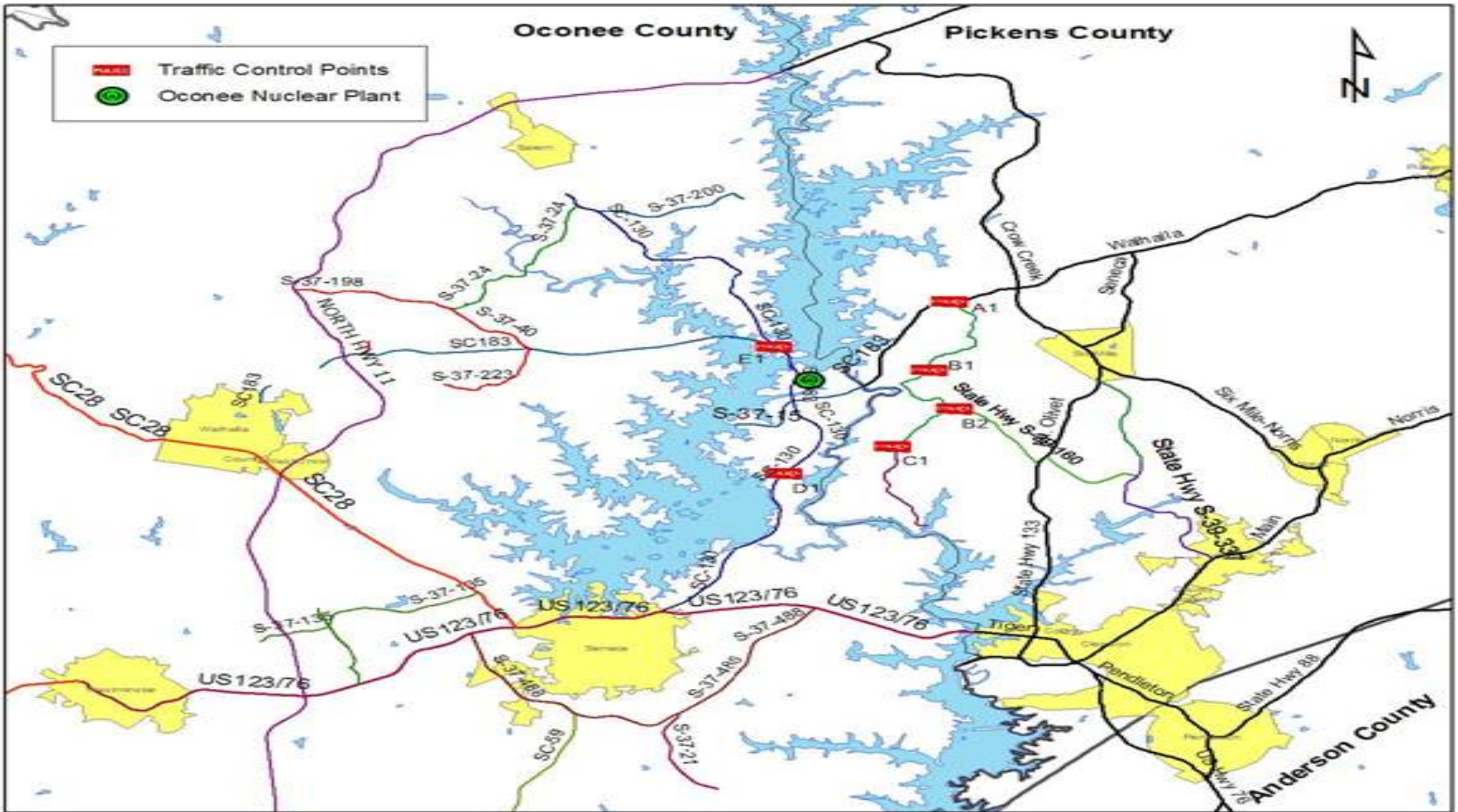
Oconee County

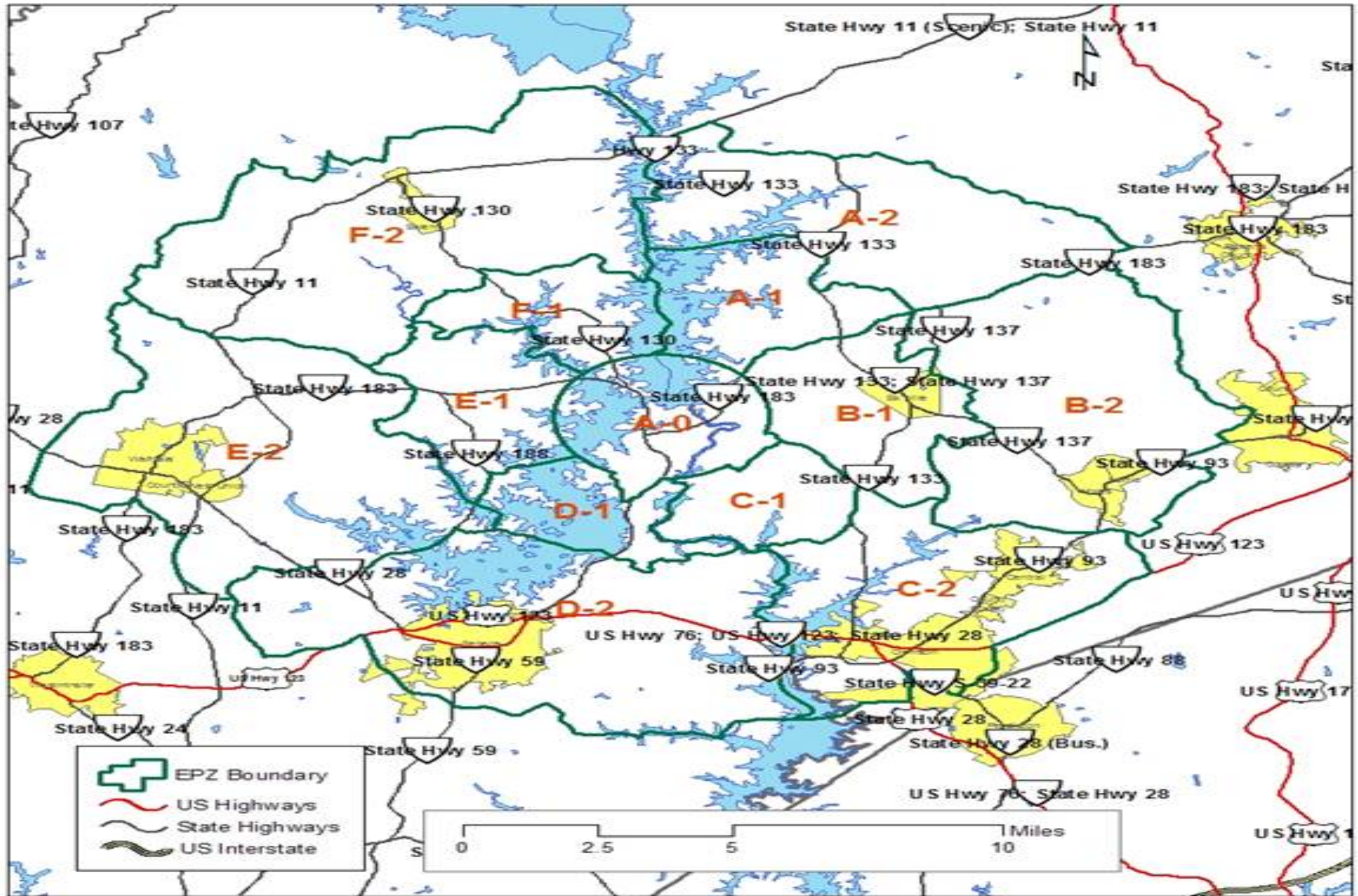
Pickens County



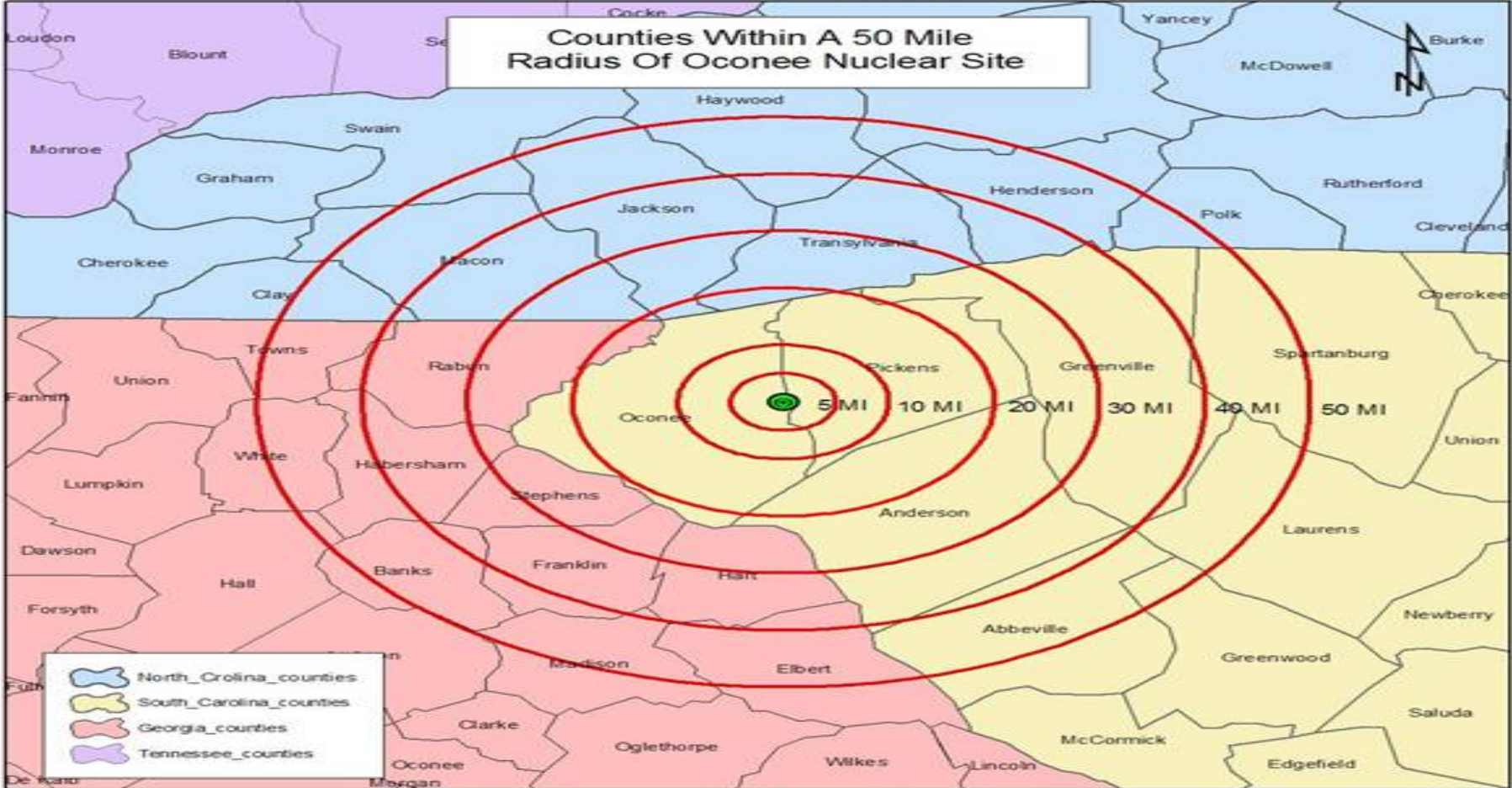
Legend:

-  Traffic Control Points
-  Oconee Nuclear Plant





Counties Within A 50 Mile Radius Of Oconee Nuclear Site





Backup Slides – ECL Descriptions



Initial Update Briefing

- **Unusual Event**
- Alert
- Site Area Emergency
- General Emergency

ONS is presently at:



Initial Update Briefing

UNUSUAL EVENT – Events are in process or have occurred which indicate a potential degradation of the level of safety of the plant or indicate a security threat to facility protection has been initiated. No releases of radioactive material requiring offsite response or monitoring are expected unless further degradation of safety systems occurs.



Initial Update Briefing

ALERT – Events are in process or have occurred which involve an actual or potential substantial degradation of the level of safety of the plant or a security event that involves probable life threatening risk to site personnel or damage to site equipment because of HOSTILE ACTION. Any releases are expected to be limited to small fractions of the EPA Protective Action Guideline exposure levels.



Initial Update Briefing

ALERT – Events are in process or have occurred which involve an actual or potential substantial degradation of the level of safety of the plant or a security event that involves probable life threatening risk to site personnel or damage to site equipment because of HOSTILE ACTION. Any releases are expected to be limited to small fractions of the EPA Protective Action Guideline exposure levels.



Initial Update Briefing

SITE AREA EMERGENCY – Events are in process or have occurred which involve actual or likely major failures of plant functions needed for the protection of the public or HOSTILE ACTION that results in intentional damage or malicious act; (1) toward site personnel or equipment that could lead to the likely failure of or; (2) that prevents effective access to equipment needed for the protection of the public. Any releases are NOT expected to result in exposure levels which exceed EPA Protective Action Guideline exposure levels outside the Exclusion Area Boundary.



Initial Update Briefing

GENERAL EMERGENCY – Events are in process or have occurred which involve actual or imminent substantial core degradation or melting with potential for loss of containment integrity or HOSTILE ACTION that results in an actual loss of physical control of the facility. Releases can be reasonably expected to exceed EPA Protective Action Guideline exposure levels outside the Exclusion Area Boundary.



Initial Update Briefing

GENERAL EMERGENCY – Events are in process or have occurred which involve actual or imminent substantial core degradation or melting with potential for loss of containment integrity or HOSTILE ACTION that results in an actual loss of physical control of the facility. Releases can be reasonably expected to exceed EPA Protective Action Guideline exposure levels outside the Exclusion Area Boundary.



Questions?